

LUKE GOGGIN REAL ESTATE



6 Peninsula Drive Eaglehawk VIC

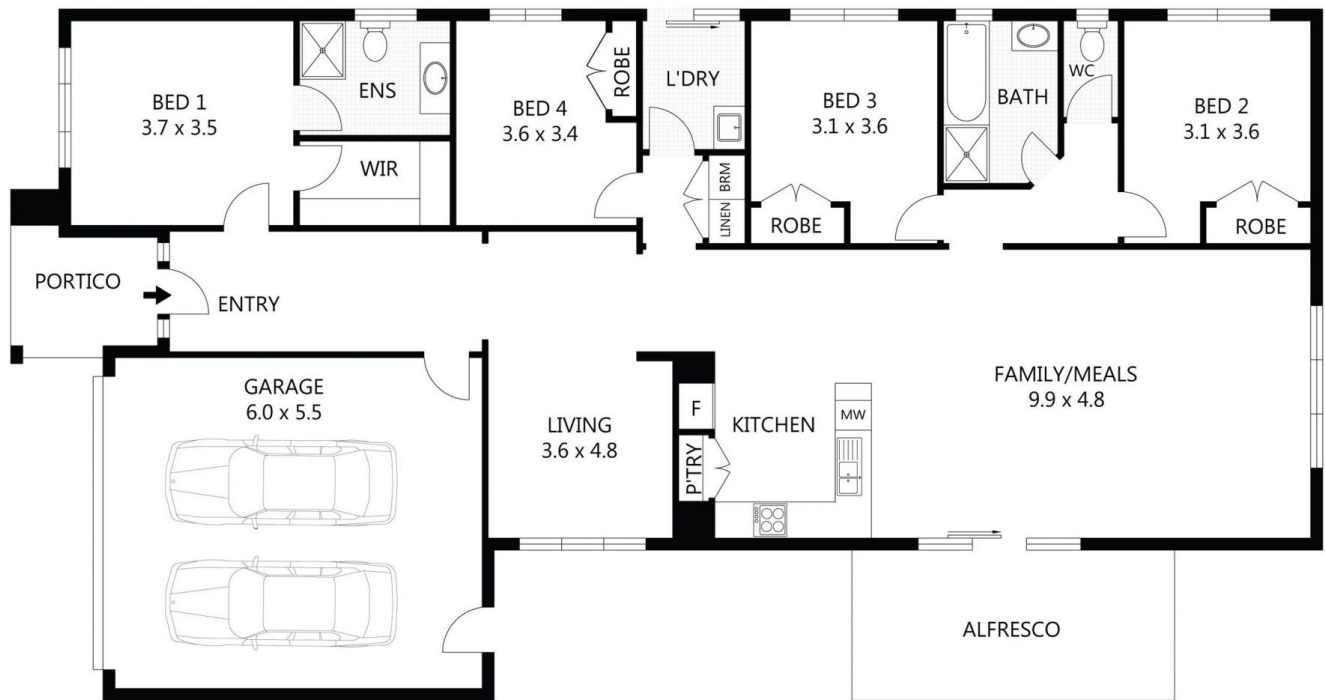
4  2  2 

This modern, 4 bedroom property set on a 556m² (approx) allotment, will tick boxes for many buyers. The generous main bedroom includes an ensuite & walk in robe, whilst the remaining 3 bedrooms have built in robes. Open plan kitchen/dining/living space can be enjoyed as well as a more private, separate lounge. The functional kitchen features modern appliances including a 900mm oven & built in pantry. There's a sleek family bathroom with separate toilet adjacent as well as the laundry & built in storage. Comfort control is maintained throughout the home by ducted gas heating & evaporative cooling. Outdoor entertaining is a breeze with the undercover & screened alfresco area. Outside you will also find an easily maintained, secure yard. Gated side access is available for an additional car, boat or caravan. Direct entry to the home is via the double lock up garage. All this, in a great location close to Neanger Golf Course, child care & transport & only

Price : \$ 620,000
Land Size : 556 sqm
View : <https://www.goggin.com.au/sale/vic/greater-bendigo-region/eaglehawk/residential/house/7424010>



Melinda Goggin
03 5442 1422



Scale in metres. Indicative only. Dimensions are approximate. All information contained herein is gathered from sources we believe to be reliable. However we cannot guarantee its accuracy and interested parties should rely on their own enquiries.

6 Peninsula Drive, Eaglehawk