




LUKE GOGGIN REAL ESTATE



21 Parkway Drive Strathfieldsaye VIC

3  2  4 

This lovely spacious residence is situated in family friendly Strathfieldsaye on 860 m2 (approx.). Step in the front door to the formal entrance and you will immediately feel at home. The hallway opens onto a large family room and open/kitchen meals area, the stylish kitchen is well appointed with gas hot plates, electric under bench stainless steel oven, dishwasher and pantry. The main bedroom is located at the rear of the house and features a walk in robe and ensuite. There are two further bedrooms with built in robes and a separate study/office which gives you the ideal opportunity to work from home. Ducted gas heating and evaporative cooling provides year round comfort.

Inspection will impress!

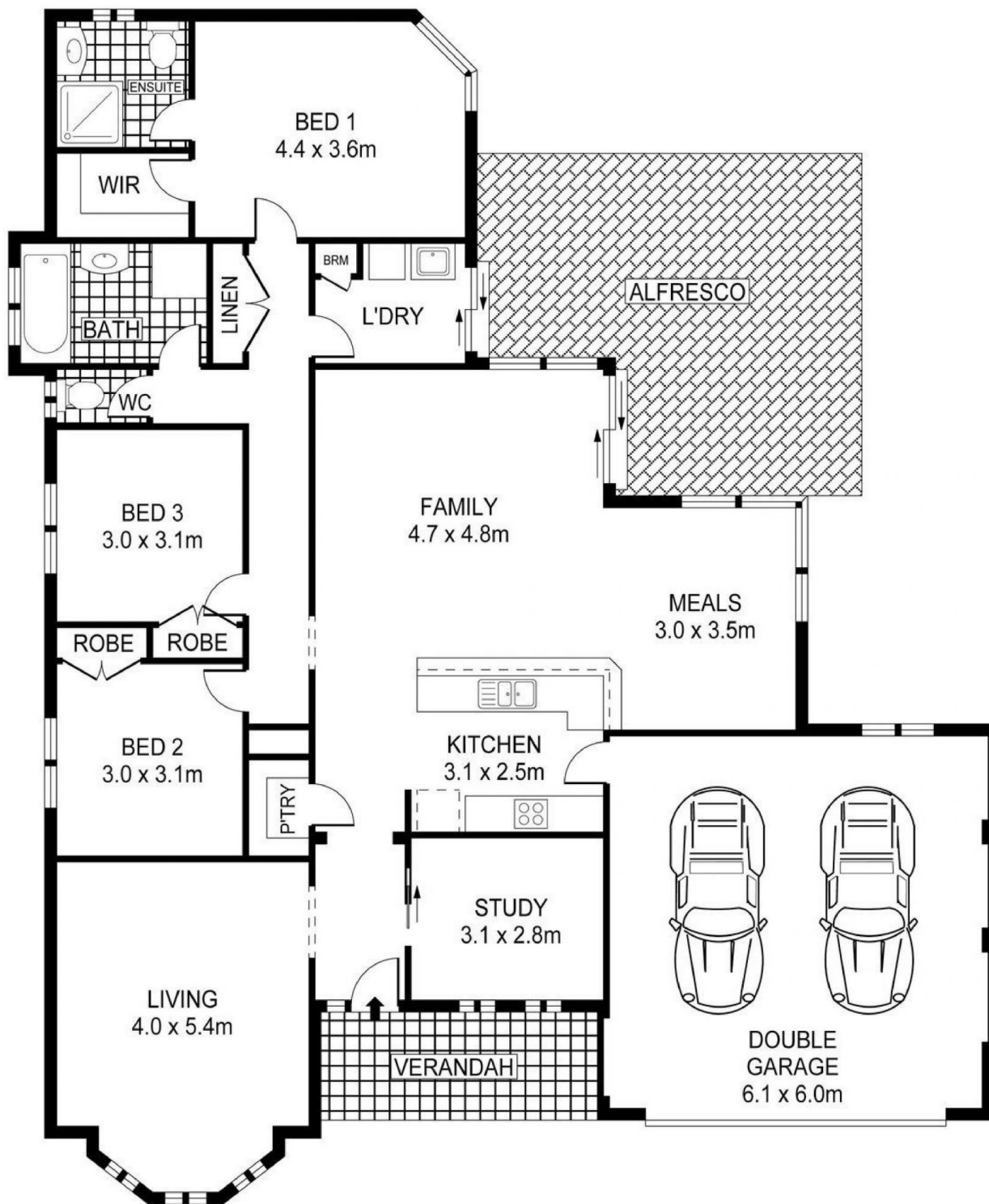
Price : \$ 473,000
Land Size : 860 sqm
View : <https://www.goggin.com.au/sale/vic/greater-bendigo-region/strathfieldsaye/residential/home/5725498>



Paul Dalton
03 5442 1422

Inside you will find:

<https://www.goggin.com.au>



PLANS SHOWN ONLY INDICATIVE OF LAYOUT. DIMENSIONS ARE APPROXIMATE.
 Ref. No. 24771

21 PARKWAY DRIVE