

# LUKE GOGGIN REAL ESTATE



11 Elizabeth Drive Strathfieldsaye VIC

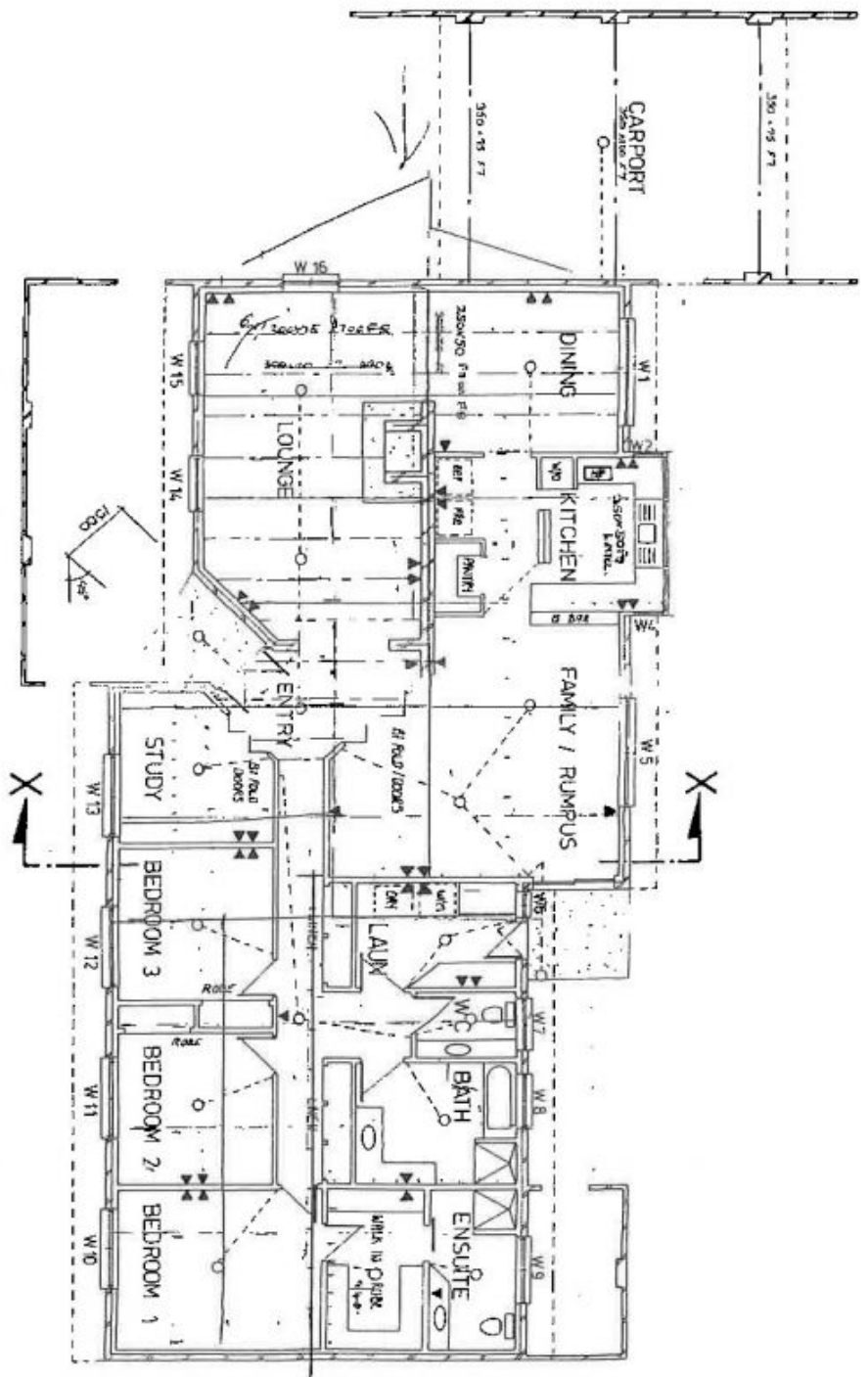
3 2 5

This beautifully appointed double brick home was craftsman built to capture the sun in winter and to remain cool in summer. The stunning high ceilings, feature windows and brickwork offer a breathtaking vista of the beautiful gardens surrounding the property. With 3 spacious bedrooms plus a study, an upstairs loft which can be used for a multitude of purposes, two ample living spaces, plus formal dining area and a country kitchen which provides more than enough space for the growing family. The property is set on a little over an acre of landscaped gardens and comes with a salt chlorinated in-ground pool, excellent shedding with side access, double carport and multiple solar panels. Located in a quiet drive in popular Strathfieldsaye and only a very short walk to shops, schools and sporting facilities. With a lovely outlook over bush land, this home offers a rare opportunity for the lucky buyer to have it all.

**Price** : \$ 525,000  
**Land Size** : 4080 sqm  
**View** : <https://www.goggin.com.au/sale/vic/greater-bendigo-region/strathfieldsaye/residential/home/5725386>



**Paul Dalton**  
03 5442 1422



# FLOOR PLAN

SCALE 1/8" = 1'-0"